

Crop Sciences is an exciting field that uses knowledge about agriculture, biology, biotechnology, genetics, and other disciplines to improve plants and their products. We offer a broad range of study opportunities ranging from cropping systems, plant breeding and pest management to biometry, molecular genetics and bioinformatics. Crop Sciences will continue to play a vital role in feeding the people of the world. Degree programs tailored to your specific interests will prepare you for a stimulating and enriching career.

Students majoring in Crop Sciences at the University of Illinois choose among six concentrations:

- Crops
- Crop Agribusiness
- Agroecology
- Plant Biotechnology and Molecular Biology
- Biological Sciences, and
- Integrated Pest Management

For information about the Department of Crop Sciences and our undergraduate programs visit the department website at <<http://www.cropsci.uiuc.edu/>> and click on the drop down menu "Academics".

Job placement has been very strong from our programs. Most graduates from our department seeking employment after receiving their B.S. degree have at least two job offers, and the average starting salary for our graduates last year was over \$44,000. Many graduates of Crop Sciences continue their education for advanced degrees.

Scholarships are available through the College of ACES and the Department of Crop Sciences. There are a number of scholarships available only to Crop Sciences students.

To learn more about majoring in Crop Sciences contact us at:

Department of Crop Sciences  
1102 S. Goodwin Ave.  
Urbana, IL 61801

Telephone: (217) 333-4256  
E-mail: [cropsci@uiuc.edu](mailto:cropsci@uiuc.edu)  
Website: [www.cropsci.uiuc.edu](http://www.cropsci.uiuc.edu)



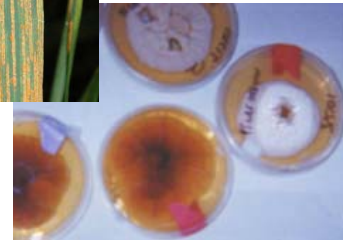
# Explore the Growing Opportunities in Crop Sciences



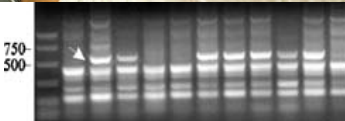
Plant Biotechnology



Plant Pathology & Pest Management



Plant Breeding



Crops and Crop Agribusiness



To learn more:  
Department of Crop Sciences  
(217) 333-4256  
[cropsci@uiuc.edu](mailto:cropsci@uiuc.edu)  
[www.cropsci.uiuc.edu](http://www.cropsci.uiuc.edu)